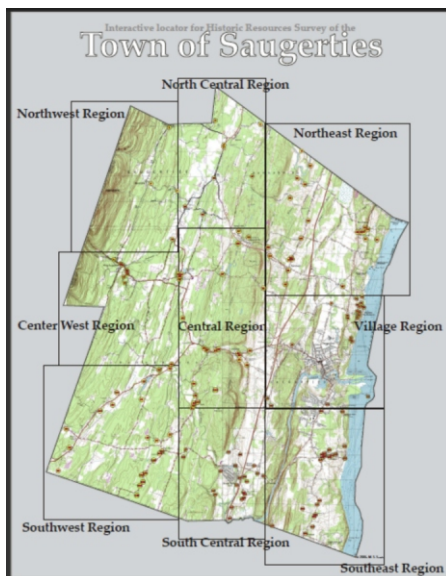


Town of Saugerties Historical Resources Survey

Prior to the Town of Saugerties Historic Preservation Ordinance, a grant was received in September, 2003 from Preserve New York, a grant program of the Preservation League of New York State and the New York State Council of the Arts, for a resources survey of the historical structural assets of Saugerties. In March of 2005, two volumes entitled ***Town of Saugerties Historical Resources Survey*** were published, one of which was over two inches thick, and copies given to the Preservation League of New York State, the New York State Department of Parks, Recreation and Historic Preservation, the Saugerties Town Clerk, the Saugerties Public Library, and the Saugerties Historical Society. With the passage of the Town of Saugerties Historic Preservation Ordinance in 2004 the Historic Preservation Commission (HPC) became the body responsible to designate historic landmarks and this historical survey passed from a responsibility of the Planning Board and Comprehensive Planning Committee to the HPC.

In 2010 the computer graphics were created by Michael Sullivan Smith for displaying the map locations of the properties listed in the survey. They were developed into a single page digital composition for “holding scans of the 155 assets found in the 800+ pages of the 2005 survey” and made a part of Michael Sullivan Smith’s interactive History Atlas of Saugerties for public access through a computer in the Saugerties Public Library. This 2010 computer graphic component of the History Atlas has now been placed on the Internet as nine eBook files in the Swiss service [www. yumpu.com](http://www.yumpu.com). The map on page 2 of this document that you are now reading and pictured here is a device that links you directly to those nine files on that yumpu.com web site .



The map on page 2 is divided into nine regions. The map itself is developed from the updated 1963 USGS topographical survey of Saugerties. Simply click on the general location of your interest and the file in Yumpu.com will open to an enlargement of that area of the map on the first page of its file. All of the properties in the survey located in that enlarged region are in the pages of this eBook flip page file, but the map on its first page acts as a graphic index from which you can simply hover your mouse or touch one of the numbered yellow circles and jump directly to the file on that asset at that place on the map.

This Internet file has pages that are enlargeable up to 5 times. The original scans were made to be enlargeable 60 times so there is no substitute for reviewing in this enlarged mode but

to see it on the computer screen in the Saugerties Public Library via the file in the History Atlas of Saugerties.

Interactive locator for Historic Resources Survey of the

Town of Saugerties

North Central Region

Northwest Region

Northeast Region

Center West Region

Central Region

Village Region

Southwest Region

South Central Region

Southeast Region

